

Anthropology of Food Week 1

[🔗](#) = leave page



Tim Roufs Inspecting Durians in Singapore Market, 2017

Available on-line in your  canvas folder at

<http://canvas.umn.edu/>

Syllabus

Calendar

Getting Started

"Setting the Anthropological Table"

If you haven't read the ["Greetings!" memo of 11 August 2020](#) [🔗](#)
and the ["Welcome!" memo of 23 August 2020](#) [🔗](#) please do that
as it contains useful and important information about the
course.

THIS WEEK'S HIGHLIGHTS

1. General Comments for the Week

This week we're off to have a look at food and culture around the world. It will be a savory adventure. This week we'll also take a few minutes to get to know one another, and our selves, and get to know how the course is set up and operates.

Where to Start?

"First Day Handout" [↗](#)

2. Live Chat: Open Forum / Office Hours

Contact Information [↗](#)

Tuesday, 1 September 2020 @ 7:00-8:00 p.m. (CDT)

"ZOOM" [↗](#)

[click ↑ here]

"Chat" [↗](#)

[click ↑ here]



3. Video Explorations

Real People . . . Real Places . . .

Videos for the Semester [↗](#)

 *That Sugar Film* -- Wikipedia [↗](#)

(102 min., 2015)

 on-line access [↗](#)

[click ↑ here]

[course viewing guide](#)



4. This Week's Slides

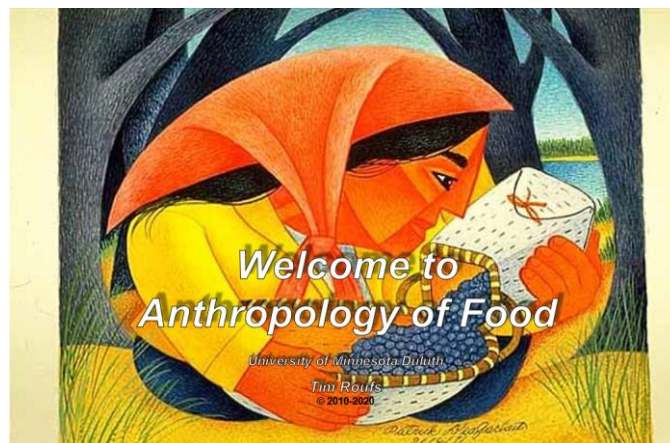
[Class Slides for the Semester](#)

Have a look at these slides using the "slide show" mode:

**“Orientation:
Introduction to Anthropology / Orientation to the Course”**

[\(.pptx\)](#)

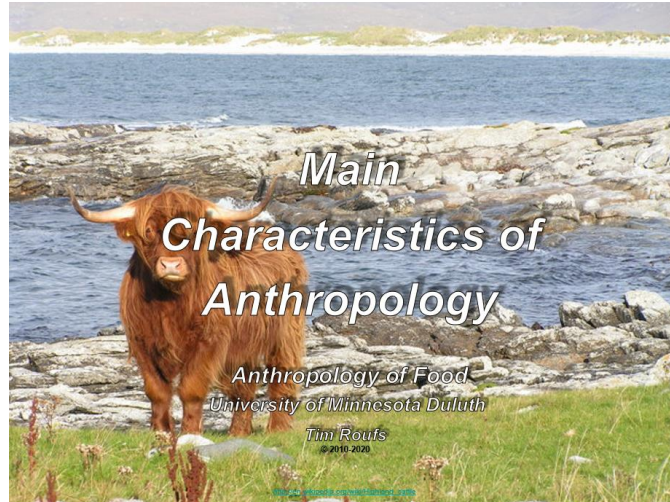
[click ↑ here]



“Main Characteristics of Anthropology: Introduction”

(.pptx) [↗](#)

[click [↑](#) here]



5. Readings for the Week

[Readings for the Semester](#) [↗](#)

REM: [Textbooks](#) [↗](#)

6. Other Assignment Information

[Main Due Dates](#) [↗](#)

[Calendar](#) [↗](#)

Week 1 Calendar

Discussion

Self-Assessment

For Fun Trivia

The citizens of what country complain that their country keeps getting left off of maps?

For other optional items for the week check [“Calendar”](#) [↗](#) or [“Syllabus”](#) [↗](#)

Questions? Comments?

1. General Comments for the Week

This week we're off to have a look at food and culture around the world. It will be a savory adventure. This week we'll also take a few minutes to get to know one another, and our selves, and get to know how the course is set up and operates.

Where to start?

The best way to start is by having a quick look at the

"First Day Handout" [↗](#)

on-line at http://www.d.umn.edu/cla/faculty/troufs/anthfood/afhandout_first-day.html#title [↗](#).

REM: Links on screenshots are not "hot" (active)

Anth3888 f2020

Anthropology of Food
University of Minnesota Duluth

27888-001 (08/31/2020 - 12/11/2020), instruction mode: Online, Roufs, Tim, 3 credits

Schedule may change as events of the semester require

First-Day Handout

[syllabus]

(.pdf version f2020)

Welcome Fall 2020

Greetings f2020 [↗](#)

Textbook [↗](#)

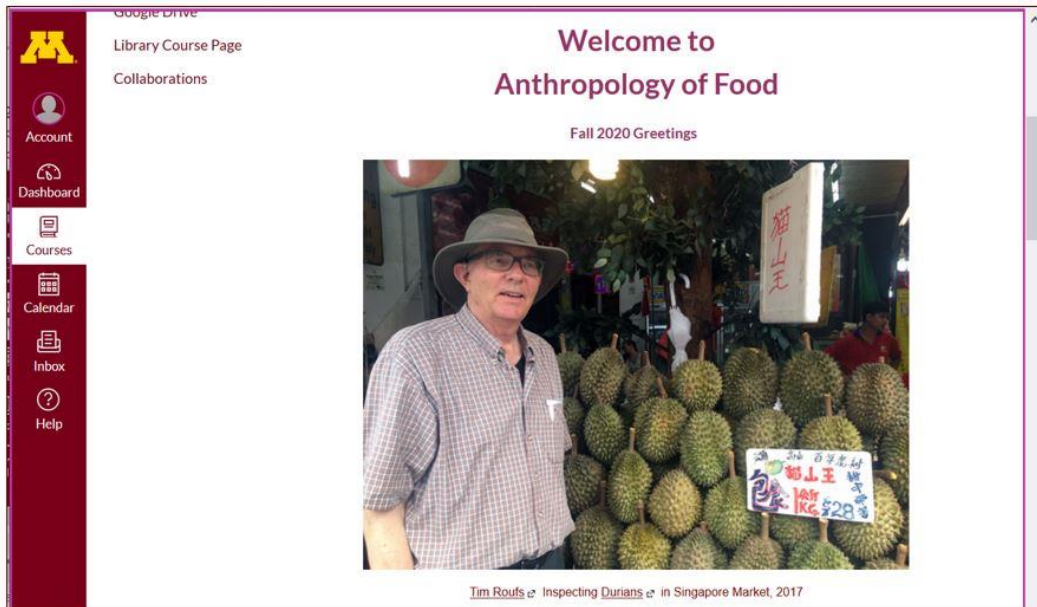
The Course in a Nutshell

Where Should I Begin?

 **canvas**
information
navigation
calendar

Also have a look at the course “**Home**” page of your Anthropology of Food  canvas folder <http://canvas.umn.edu/> . It will look something like this . . .

REM: Links on screenshots are not “hot” (active)



Check the links on “**Home**” page . . .

REM: Links on screenshots are not “hot” (active)



2. Live Chat: Open Forum / Office Hours

[Contact Information](#)

Tuesday, 1 September 2020 @ 7:00-8:00 p.m. (CDT)



[“ZOOM”](#)

[click ↑ here]

[“Chat”](#)

[click ↑ here]

Live Chat is optional. Transcripts of the discussions will be available in your Chat folder.

2020 Fall (08/11/2020-01/01/2021) Recent Announcements

Home

Announcements

Syllabus

People

NameCoach Roster

Discussions

Quizzes

Grades

Google Drive

Library Course Page

Collaborations

Account

Dashboard

Courses

Calendar

Inbox

Help

Welcome to the Anthropology of Food!

SyllabusWelcome! [click ↑ here] T...

Posted on: May 11, 2020 at 1:01am

ANTH 3888 (080) Anthropology of Food (F...

Join chat here 7:00-8:00 p.m.

Welcome to Anthropology of Food

Fall 2020 Greetings

3. Video Explorations

Real People . . . Real Places . . .

[Videos for the Semester](#)

 [That Sugar Film](#) -- [Wikipedia](#)
(102 min., 20145)

 [on-line access](#)

[click ↑ here]

[course viewing guide](#)



THAT SUGAR MOVEMENT was born from the success of **That Sugar Film**, Australia's highest earning cinema documentary which raised global awareness of the impact of hidden sugars on people's health.

THAT SUGAR FILM is one man's journey to discover the bitter truth about sugar. Damon Gameau embarks on a unique experiment to document the effects of a high sugar diet on a healthy body, consuming only foods that are commonly perceived as "healthy."

Through this entertaining and informative journey, Damon highlights some of the issues that plague the sugar industry, and where sugar lurks on supermarket shelves.

The film features guest cameos from the likes of Stephen Fry, Isabel Lucas and Brenton Thwaites, interviews with Gary Taubes, Michael Moss and Dr Kimber Stanhope plus a rocking soundtrack including Depeche Mode, Peter Gabriel and Florence and the Machine.

That Sugar Film will forever change the way you think about 'healthy' food.

-- That Sugar Film HomePage

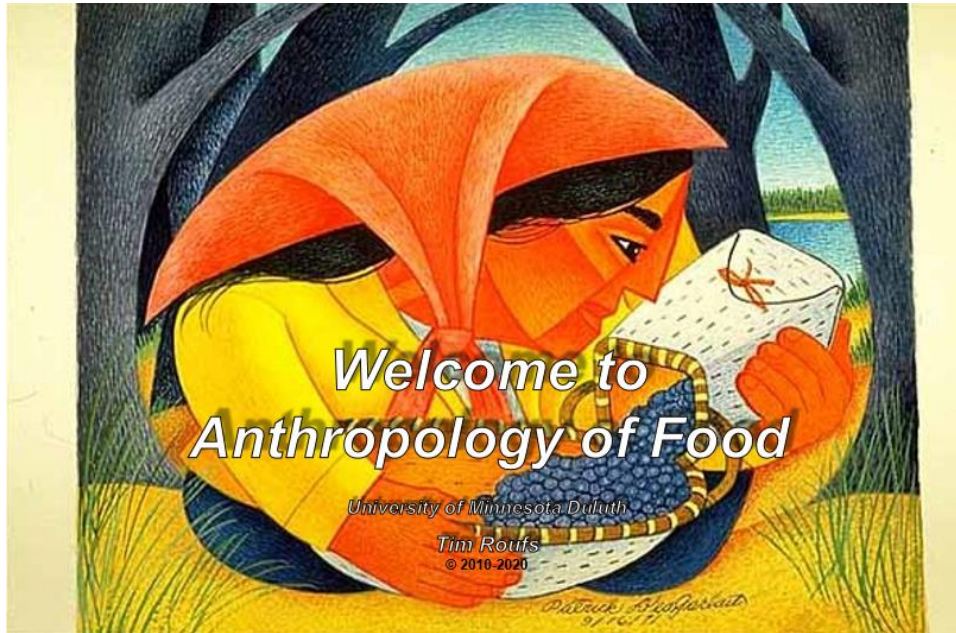
4. This Week's Slides

[Class Slides for the Semester](#)

**“Orientation:
Introduction to Anthropology / Orientation to the Course”**

[\(.pptx\)](#)

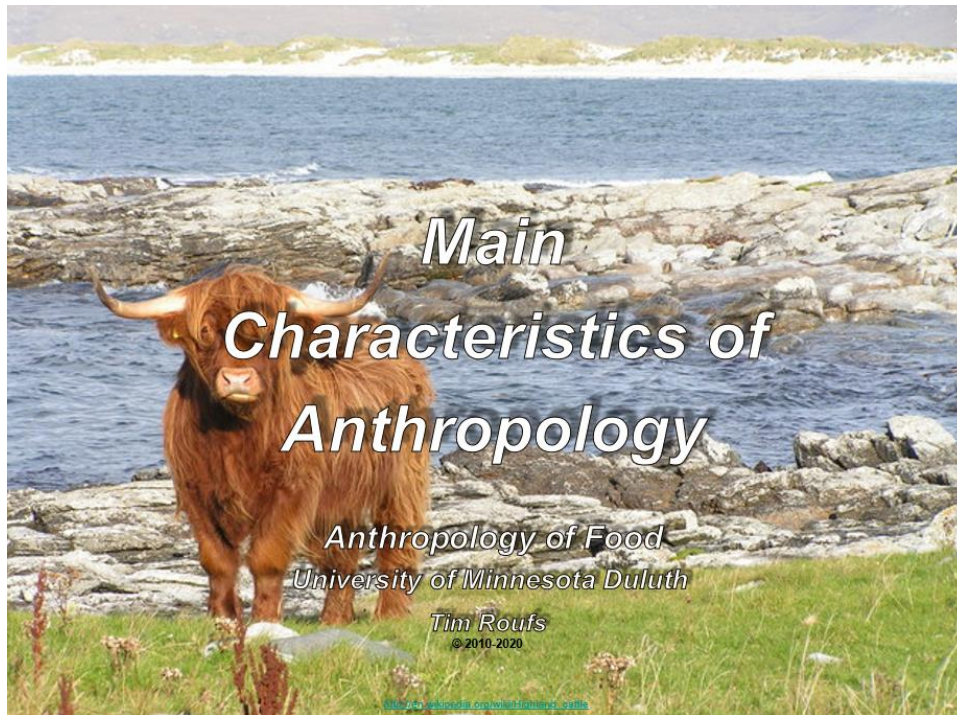
[\[click ↑ here\]](#)



“Main Characteristics of Anthropology: Introduction”

[\(.pptx\)](#)

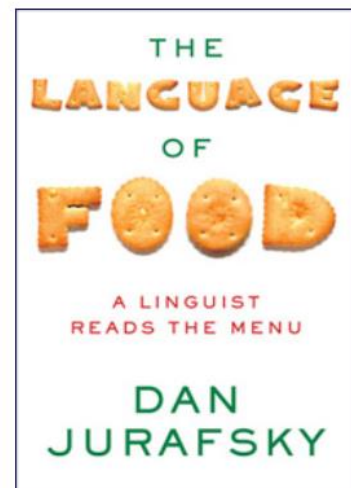
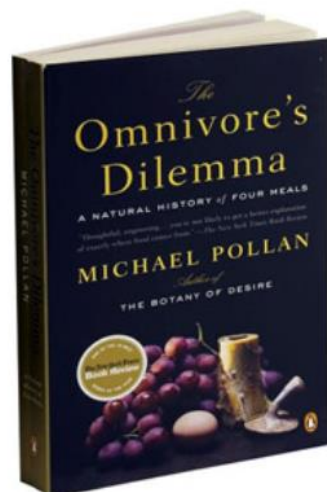
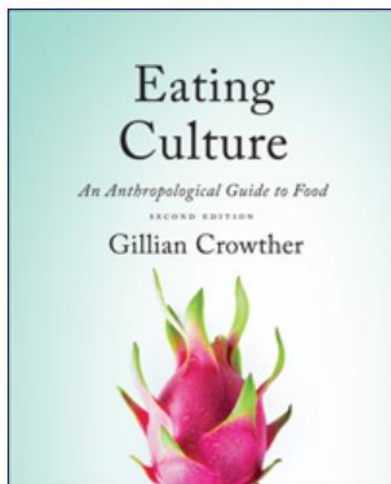
[\[click ↑ here\]](#)



5. Readings for the Week

[Readings for the Semester](#)

REM: [Textbooks](#)



- **[Eating Culture, Second Edition, Gillian Crowther](#)**
 - INTRODUCTION, "SETTING THE ANTHROPOLOGICAL TABLE"
 - *Glossary* page through the *Glossary* on pp. 301-312 and familiarize yourself with the terms
- **[Omnivore's Dilemma, Michael Pollan](#)**

(Assignments start in [Week 2](#))
- **[The Language of Food, Dan Jurafsky](#)**

(Assignments start in [Week 4](#))

6. Other Assignment Information

[Main Due Dates](#)

[Calendar](#)

Week 1 Calendar

REM: Links on screenshots are not "hot" (active)

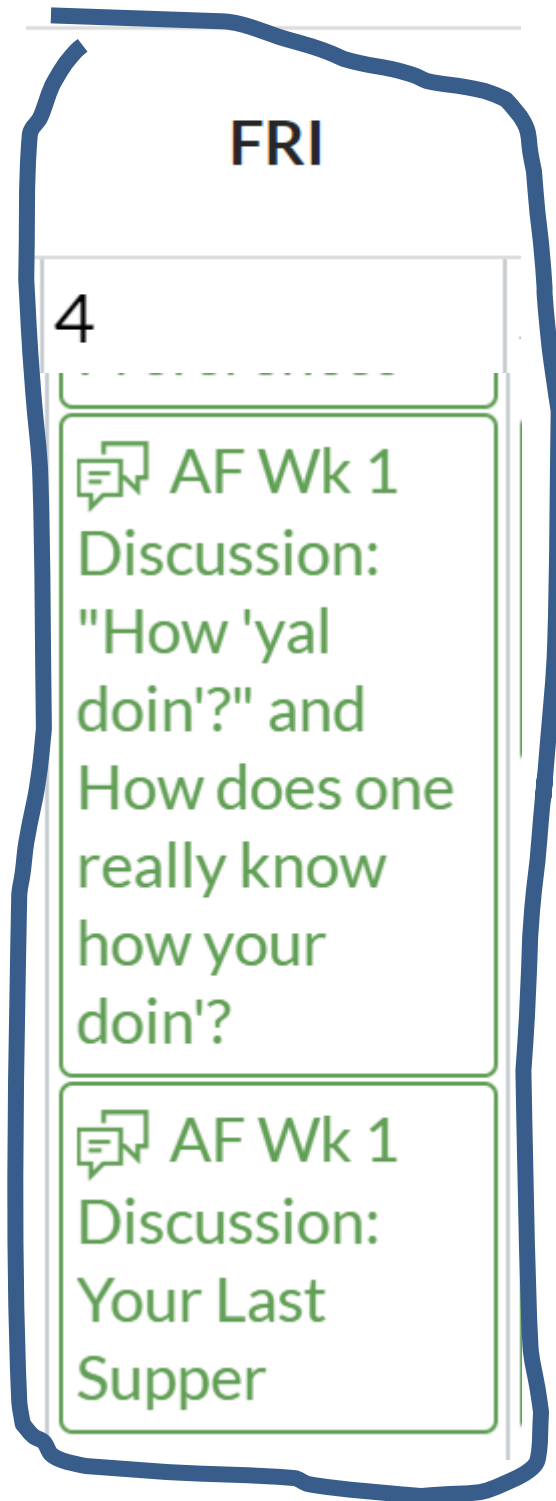
Readings for the Week

Live Chat
Tuesday 7:00 – 8:00 p.m.

See comments below

The links to the on-line movies are on your Canvas calendar

Discussion



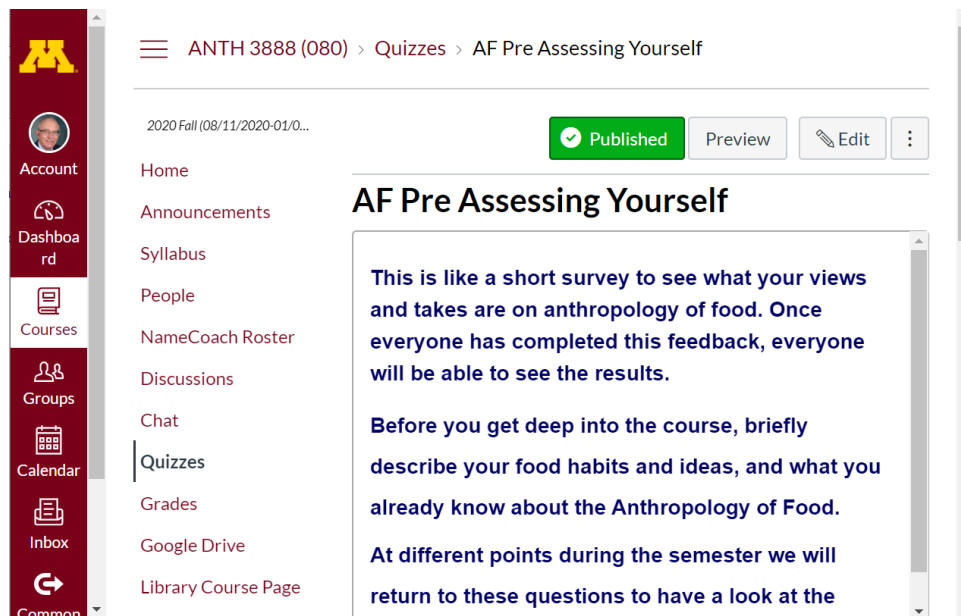
Be sure to check the details of the **activities and assignments** of the week in your  canvas folder. With the Week 1 Discussions and Activities,

for e.g., we'd like to find out a little bit about your background and thoughts on food topics. . . .

This week in the first of two Discussions one of your tasks is to **keep track of a day of your food intake**. *One of the reasons for doing this, besides giving you some idea of how you are doing in terms of your overall “junk calorie” intake (basically SUGAR), is for you to see how difficult it is getting good data when doing food research involving food and people.* Detailed instructions are included on the *Discussion* page.

Self-Assessment

REM: Links on screenshots are not “hot” (active)



The screenshot shows a Blackboard course interface. On the left is a navigation menu with icons for Account, Dashboard, Courses, Groups, Calendar, Inbox, and Common. The main content area shows the course path: ANTH 3888 (080) > Quizzes > AF Pre Assessing Yourself. Below the path, there is a '2020 Fall (08/11/2020-01/0...)' label and a 'Published' status button. A list of course items is visible, including Home, Announcements, Syllabus, People, NameCoach Roster, Discussions, Chat, Quizzes, Grades, Google Drive, and Library Course Page. The 'AF Pre Assessing Yourself' quiz is highlighted, showing a description: 'This is like a short survey to see what your views and takes are on anthropology of food. Once everyone has completed this feedback, everyone will be able to see the results. Before you get deep into the course, briefly describe your food habits and ideas, and what you already know about the Anthropology of Food. At different points during the semester we will return to these questions to have a look at the'.


For other optional items for the week check [“Calendar”](#) or [“Syllabus”](#)


For Fun Food Trivia for the Week . . .

[What is longest word ever to appear in all of literature? ↗](#)


[Loadofotemachoselachogaleokranioleipsanodrimhypotrimmatos@phloparaoemellotakatechymenokichlopikossyphophattoperisteralekrryonoprekephallokisklopeleiofagaoiosiraioabphteraganopterygion](#) ↗

[Answer ↗](#)

If you have any **questions or comments** right now, please do not hesitate to post them on the  canvas “Discussions”, or e-mail troufs@d.umn.edu ↗, or ZOOM <https://umn.zoom.us/my/troufs> ↗. (E-mail is fastest, and most generally best as quite often URLs need be sent.)

REM: Each week—usually on Sunday—you will receive a “What’s Happening” memo like this in your UM e-mail account and the same memo will also be available in your  canvas folder in three places . . .



REM: You can synchronize your  canvas calendar with your UMD Google calendar, if you want. Information for that is [here](#) for f2020.


Best Wishes,

Tim Roufs

<http://www.d.umn.edu/~troufs/>

<https://umn.zoom.us/my/troufs>

[other contact information](#)

P.S. REM: If you are new to the world of "technology" don't worry too much about that. Things may not "work" for you at first, but hang in there and we'll help you along. If you have not used  canvas course management system before, you might find it helpful to view the **[Canvas Student Guide](#)**.